

Customer :

customer

Customer part :

customer part

Comment :

Comment

S1=3.06

S2=2.93

Tmax=464

Tp S2=503.0

PI=0.51

HI=73

Sample =1733.30

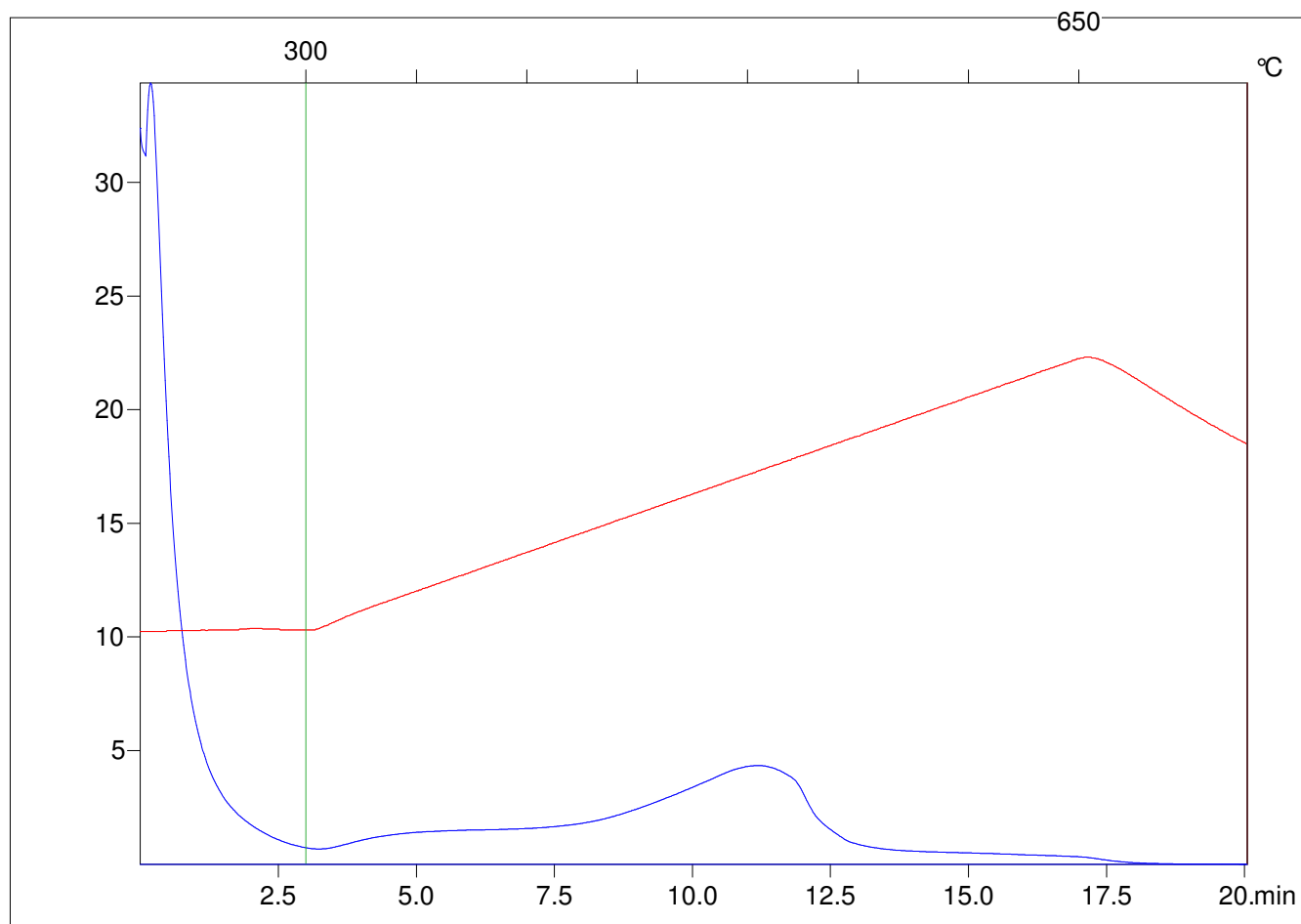
Method =Bulk Rock

Cycle=Basic

KFID(10*9)=1444

Qty =69.7

TOC=4.01



C:\VINC\PK2_1792\PK057.R00 : FID pyrolysis graphic

State

Pyro Status

Oxi Status